

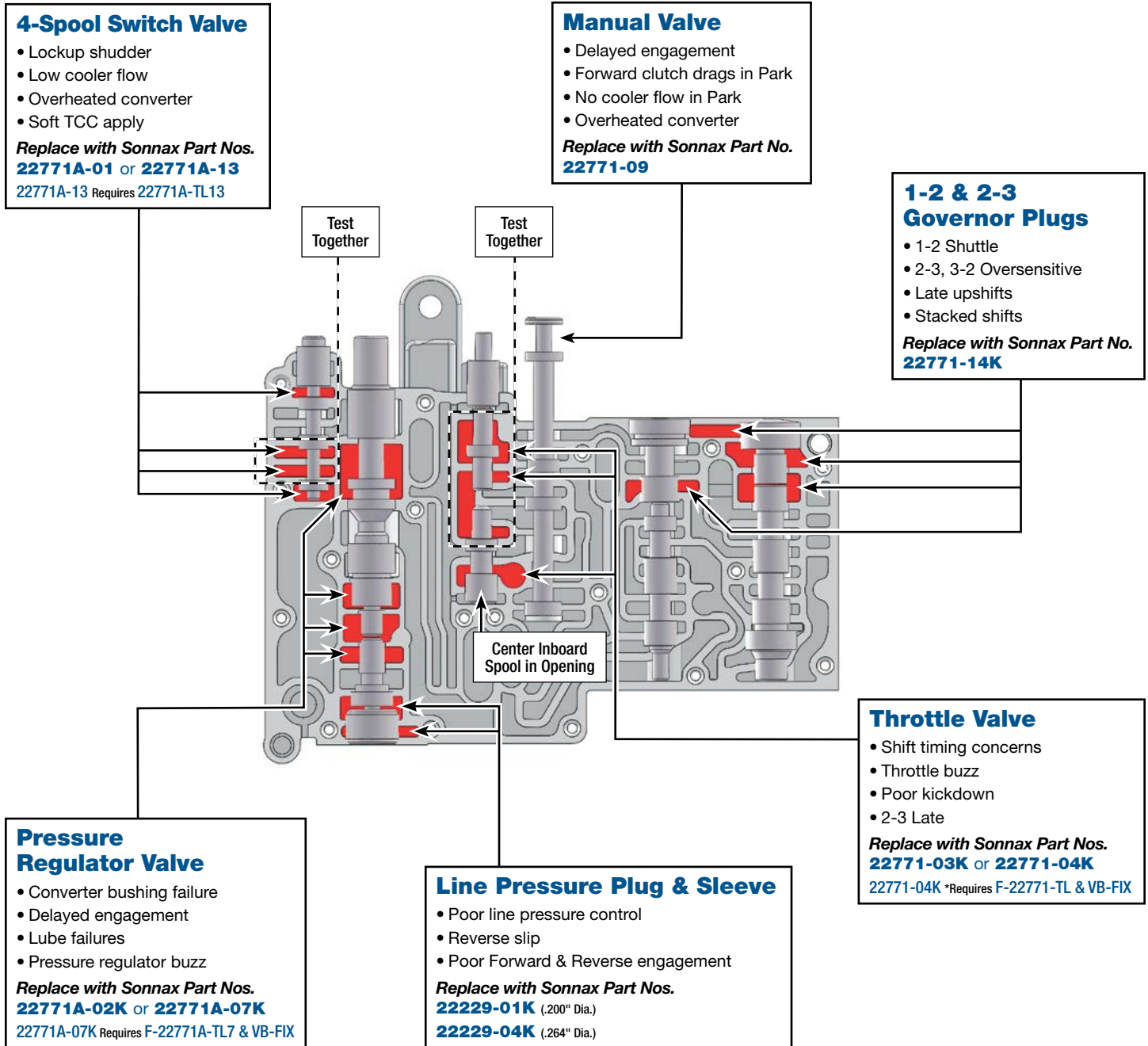
# Critical Wear Areas & Vacuum Test Locations



**NOTE:** OE valves are shown in rest position and should be tested in rest position unless otherwise indicated. Test locations are pointed to with an arrow. Springs are not shown for visual clarity. Low vacuum reading indicates wear and Sonnax parts noted for replacement.

## Upper Valve Body • 46RE Shown

Click on Sonnax part numbers to see more information.



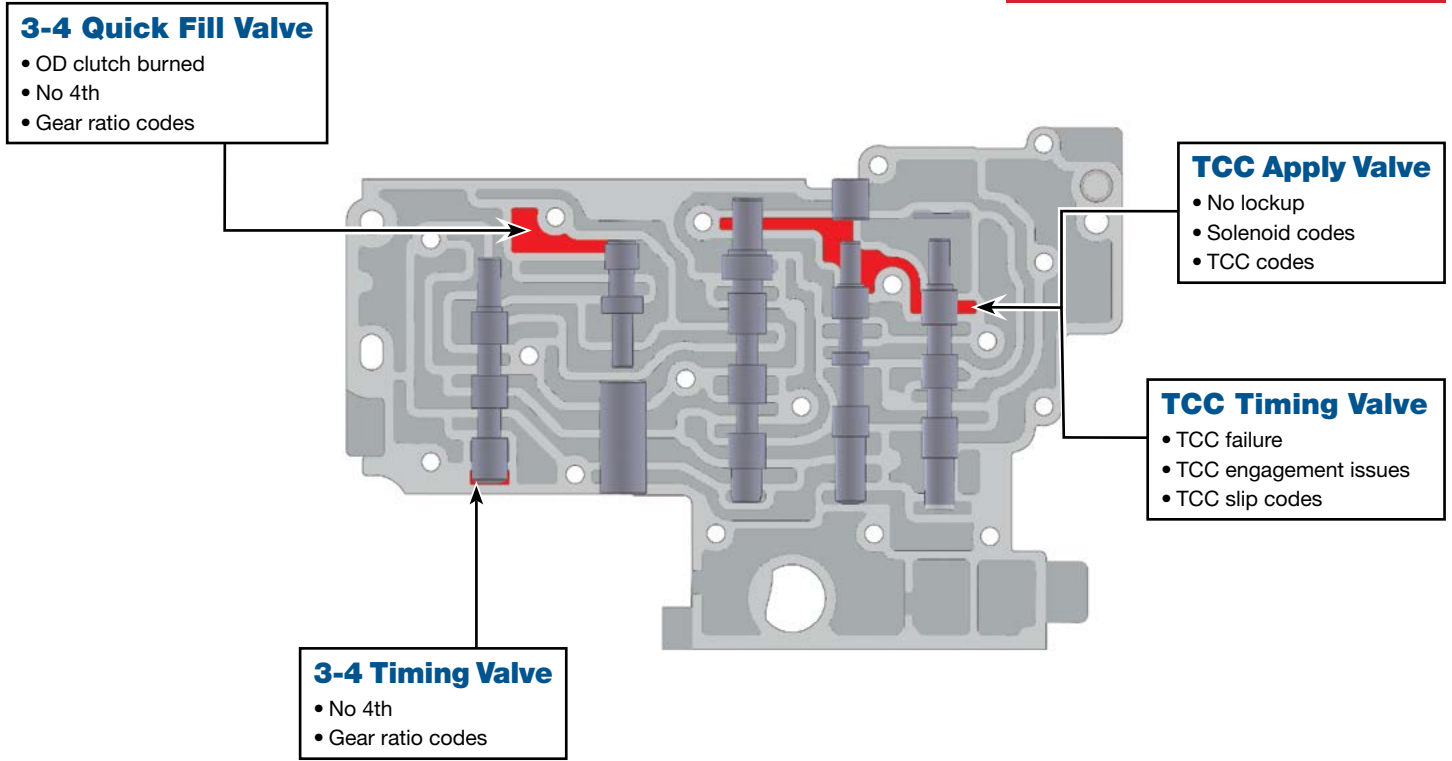
## Critical Wear Areas & Vacuum Test Locations



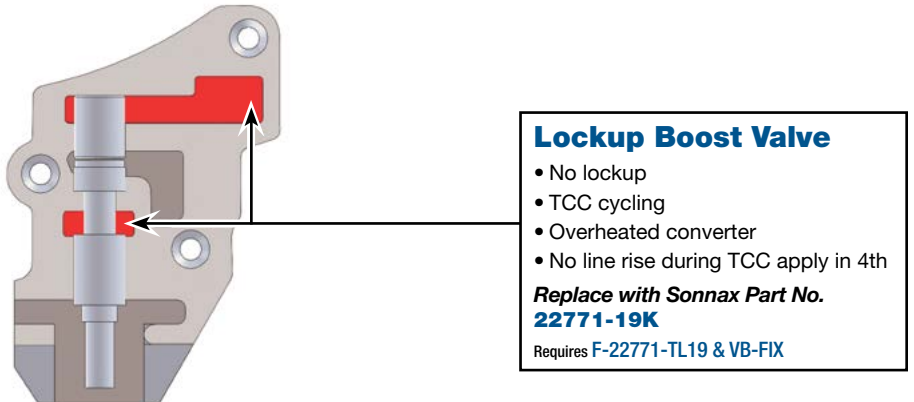
**NOTE:** OE valves are shown in rest position and should be tested in rest position unless otherwise indicated. Test locations are pointed to with an arrow. Springs are not shown for visual clarity. Low vacuum reading indicates wear and Sonnax parts noted for replacement.

### Lower Valve Body • 46RE Shown

**Click on Sonnax part numbers to see more information.**



### Limit Valve Housing

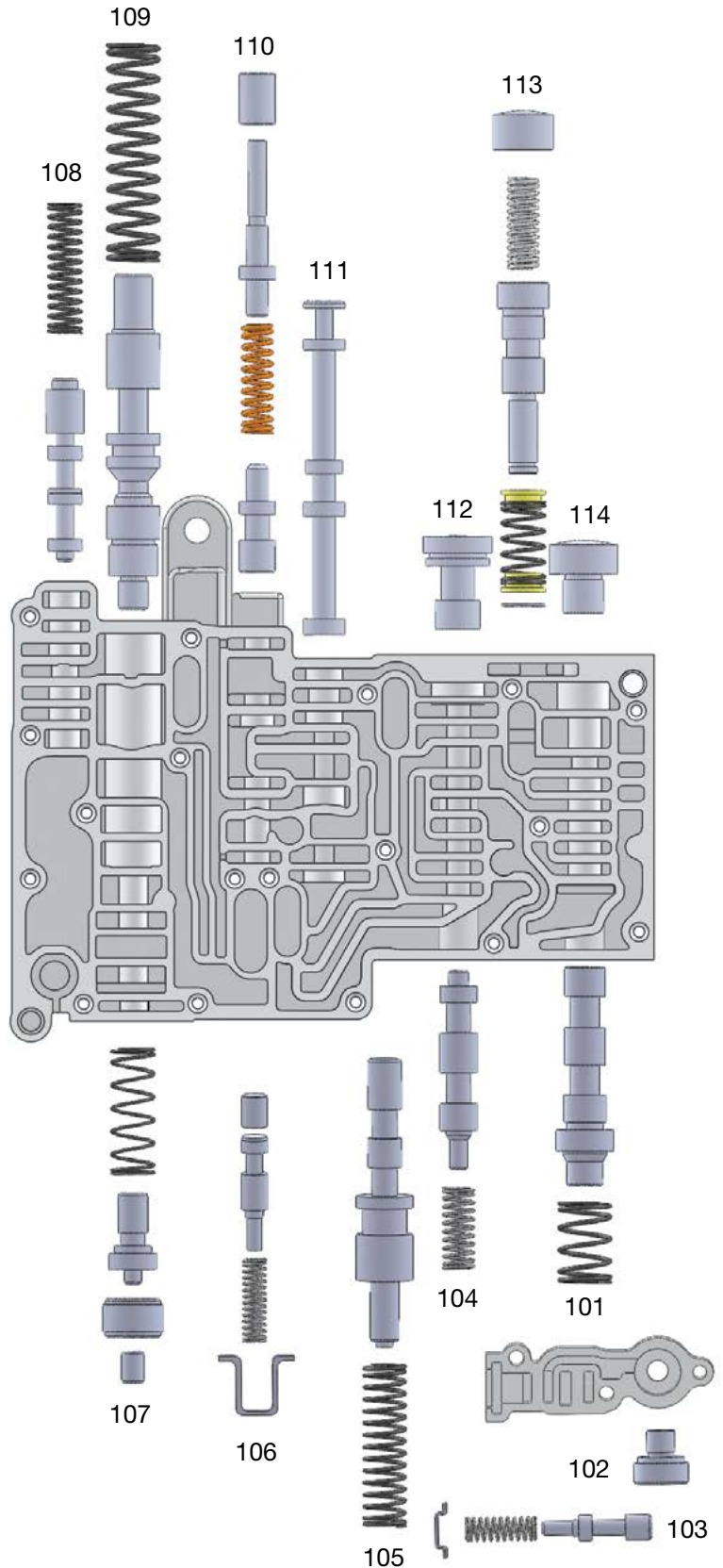


# OE Exploded View

## Upper Valve Body • 46RE Shown

### Upper Valve Body Descriptions

| I.D. No. | Description  |
|----------|--|
| 101      | 2-3 Shift Valve  |
| 102      | 2-3 Throttle Valve Plug  |
| 103      | Limit Valve  |
| 104      | 1-2 Shift Valve  |
| 105      | 1-2 Shift Control Valve  |
| 106      | Lockup Boost Valve   |
| 107      | Throttle Pressure Valve (inboard),<br>Line Pressure Plug & Sleeve (outboard) |
| 108      | 4-Spool Switch Valve   |
| 109      | Pressure Regulator Valve   |
| 110      | Throttle Valve (inboard),<br>Kickdown Valve and Sleeve (outboard)            |
| 111      | Manual Valve   |
| 112      | 1-2 Governor Plug  |
| 113      | Shuttle Valve  |
| 114      | 2-3 Governor Plug  |



## OE Exploded View

### Lower Valve Body • 46RE Shown

#### Lower Valve Body Descriptions

| I.D. No. | Description                          |
|----------|--------------------------------------|
| 201      | 3-4 Quick Fill Valve                 |
| 202      | 3-4 Timing Valve                     |
| 203      | 3-4 Shift Valve                      |
| 204      | Torque Converter Clutch Apply Valve  |
| 205      | Torque Converter Clutch Timing Valve |

