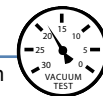




Critical Wear Areas & Vacuum Test Locations

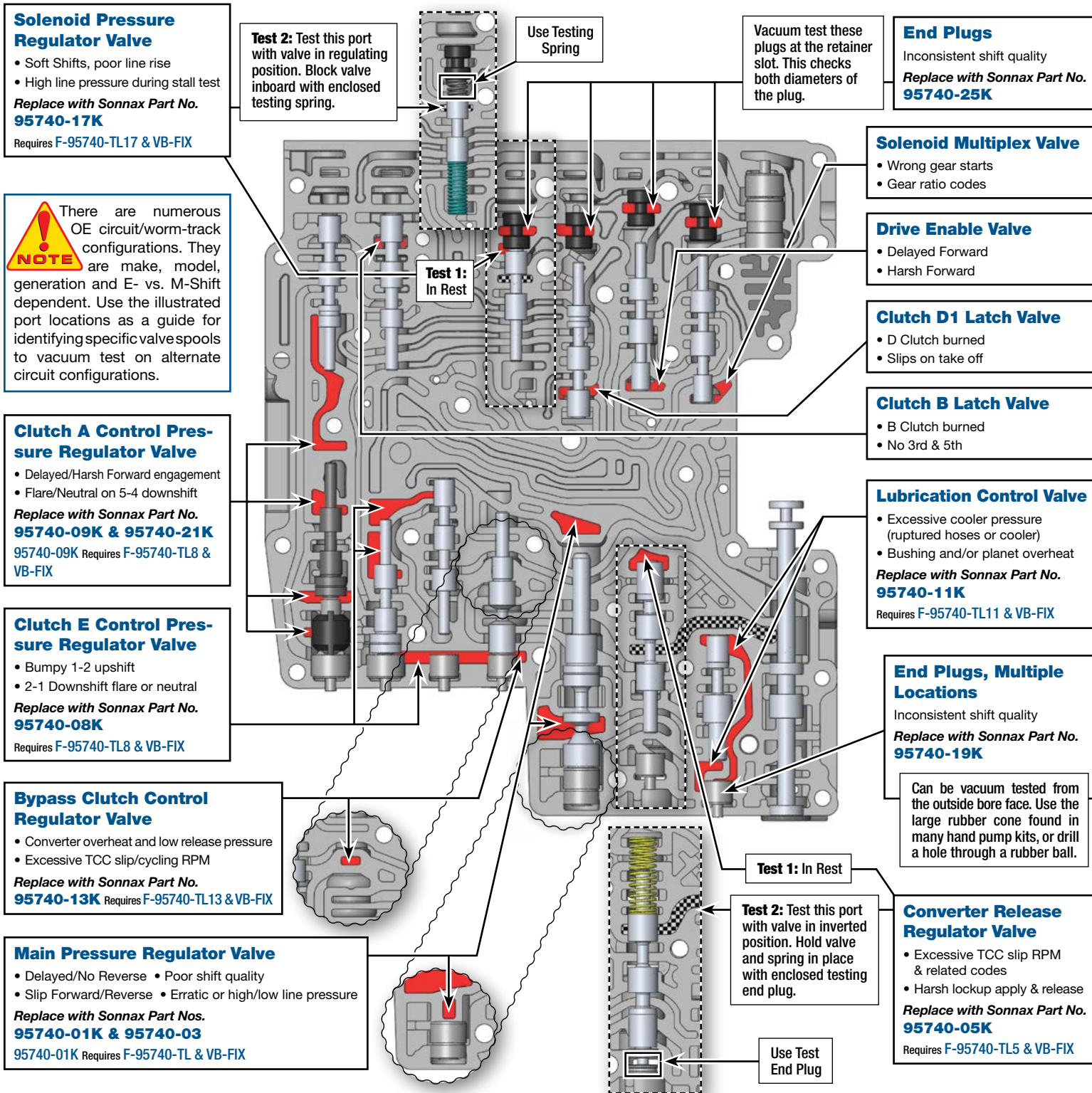


NOTE: OE valves are shown in rest position and should be tested in rest position unless otherwise indicated. Test locations are pointed to with an arrow. Springs are not shown for visual clarity. Low vacuum reading indicates wear and Sonnax parts noted for replacement.

Lower Valve Body • Jaguar ZF6HP26, M-Shift Shown Here

Click on Sonnax part numbers to see more information.

NOTE: ZF6HP19/26/32 (Gen. 1) applications with an 053 separator plate have significantly different valve line-ups and locations. Reference [Vacuum Test Guide for 053 plate](#) for test locations and replacement parts.



Solenoid Pressure Regulator Valve
 • Soft Shifts, poor line rise
 • High line pressure during stall test
Replace with Sonnax Part No. 95740-17K
 Requires F-95740-TL17 & VB-FIX

Test 2: Test this port with valve in regulating position. Block valve inboard with enclosed testing spring.

Use Testing Spring

Vacuum test these plugs at the retainer slot. This checks both diameters of the plug.

End Plugs
 Inconsistent shift quality
Replace with Sonnax Part No. 95740-25K

Solenoid Multiplex Valve
 • Wrong gear starts
 • Gear ratio codes

Drive Enable Valve
 • Delayed Forward
 • Harsh Forward

Clutch D1 Latch Valve
 • D Clutch burned
 • Slips on take off

Clutch B Latch Valve
 • B Clutch burned
 • No 3rd & 5th

Lubrication Control Valve
 • Excessive cooler pressure (ruptured hoses or cooler)
 • Bushing and/or planet overheat
Replace with Sonnax Part No. 95740-11K
 Requires F-95740-TL11 & VB-FIX

End Plugs, Multiple Locations
 Inconsistent shift quality
Replace with Sonnax Part No. 95740-19K

Can be vacuum tested from the outside bore face. Use the large rubber cone found in many hand pump kits, or drill a hole through a rubber ball.

Converter Release Regulator Valve
 • Excessive TCC slip RPM & related codes
 • Harsh lockup apply & release
Replace with Sonnax Part No. 95740-05K
 Requires F-95740-TL5 & VB-FIX

NOTE There are numerous OE circuit/worm-track configurations. They are make, model, generation and E- vs. M-Shift dependent. Use the illustrated port locations as a guide for identifying specific valvespools to vacuum test on alternate circuit configurations.

Clutch A Control Pressure Regulator Valve
 • Delayed/Harsh Forward engagement
 • Flare/Neutral on 5-4 downshift
Replace with Sonnax Part No. 95740-09K & 95740-21K
 95740-09K Requires F-95740-TL8 & VB-FIX

Clutch E Control Pressure Regulator Valve
 • Bumpy 1-2 upshift
 • 2-1 Downshift flare or neutral
Replace with Sonnax Part No. 95740-08K
 Requires F-95740-TL8 & VB-FIX

Bypass Clutch Control Regulator Valve
 • Converter overheat and low release pressure
 • Excessive TCC slip/cycling RPM
Replace with Sonnax Part No. 95740-13K Requires F-95740-TL13 & VB-FIX

Main Pressure Regulator Valve
 • Delayed/No Reverse • Poor shift quality
 • Slip Forward/Reverse • Erratic or high/low line pressure
Replace with Sonnax Part Nos. 95740-01K & 95740-03
 95740-01K Requires F-95740-TL & VB-FIX

Test 1: In Rest

Test 2: Test this port with valve in inverted position. Hold valve and spring in place with enclosed testing end plug.

Use Test End Plug

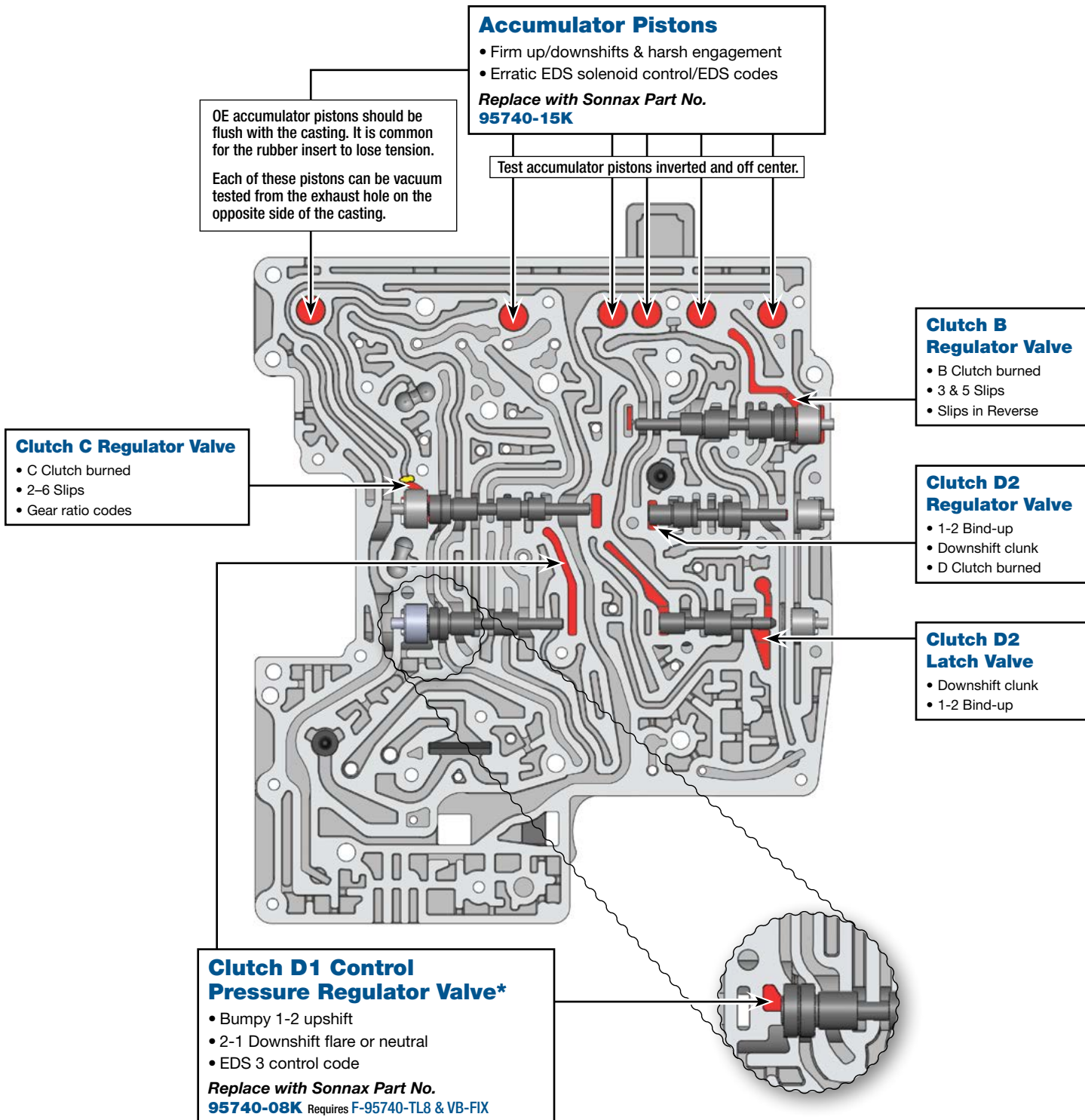


Critical Wear Areas & Vacuum Test Locations



NOTE: OE valves are shown in rest position and should be tested in rest position unless otherwise indicated. Test locations are pointed to with an arrow. Springs are not shown for visual clarity. Low vacuum reading indicates wear and Sonnax parts noted for replacement.

Click on Sonnax part numbers to see more information.



*6R80 applications, 2012-later, have a different design clutch D1 pressure regulator valve. Sonnax part 95740-08K will not work in that application. A quick identification of this valve body is lack of clutch D2 latch valve.

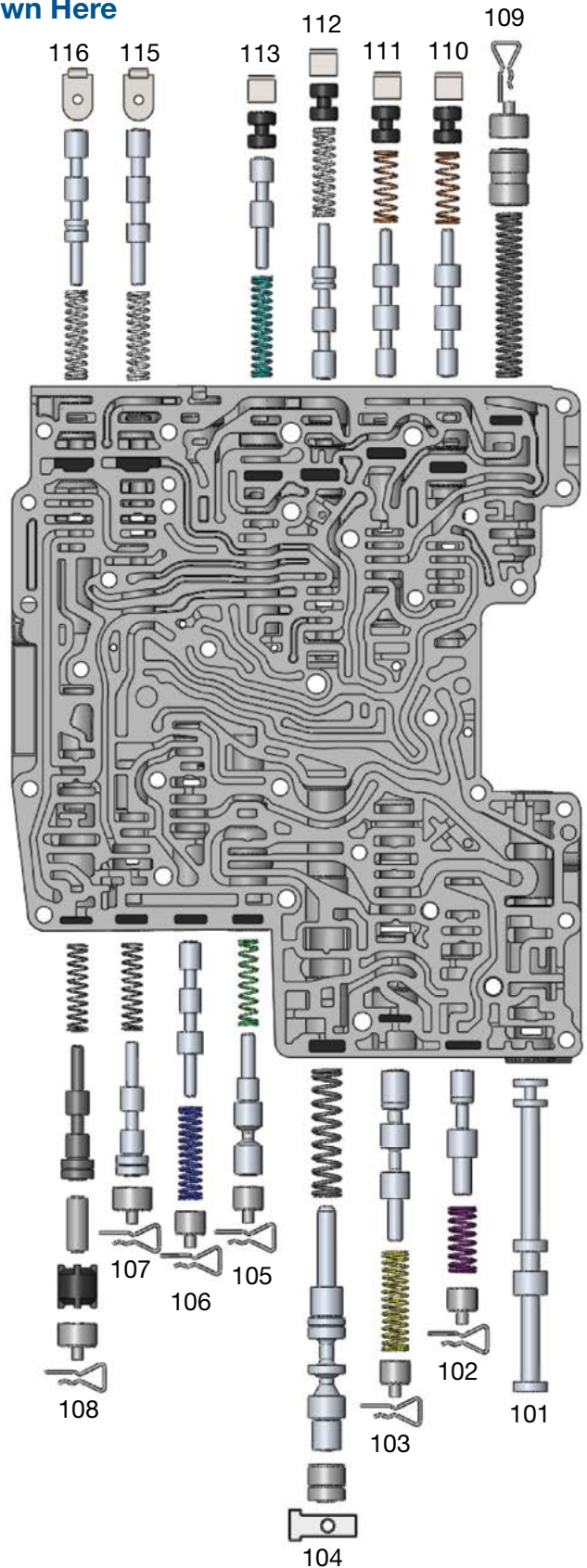


OE Exploded View

Lower Valve Body • Jaguar ZF6HP26, M-Shift Shown Here

NOTE: Depending upon vehicle application, the OE springs shown may not be present.

Lower Valve Body Descriptions	
I.D No.	Description
101	Manual Valve
102	Lubrication Control Valve
103	Converter Release Regulator Valve
104	Main Pressure Regulator Valve
105	Bypass Clutch Control Regulator Valve
106	Clutch E Latch Valve
107**	Clutch E Control Pressure Regulator Valve
108	Clutch A Control Pressure Regulator Valve
109	Delay Accumulator Piston
110	Solenoid Multiplex Valve
111	Drive Enable Valve
112	Clutch D1 Latch Valve
113	Solenoid Pressure Regulator Valve
115	Clutch B Latch Valve
116	Clutch A Latch Valve

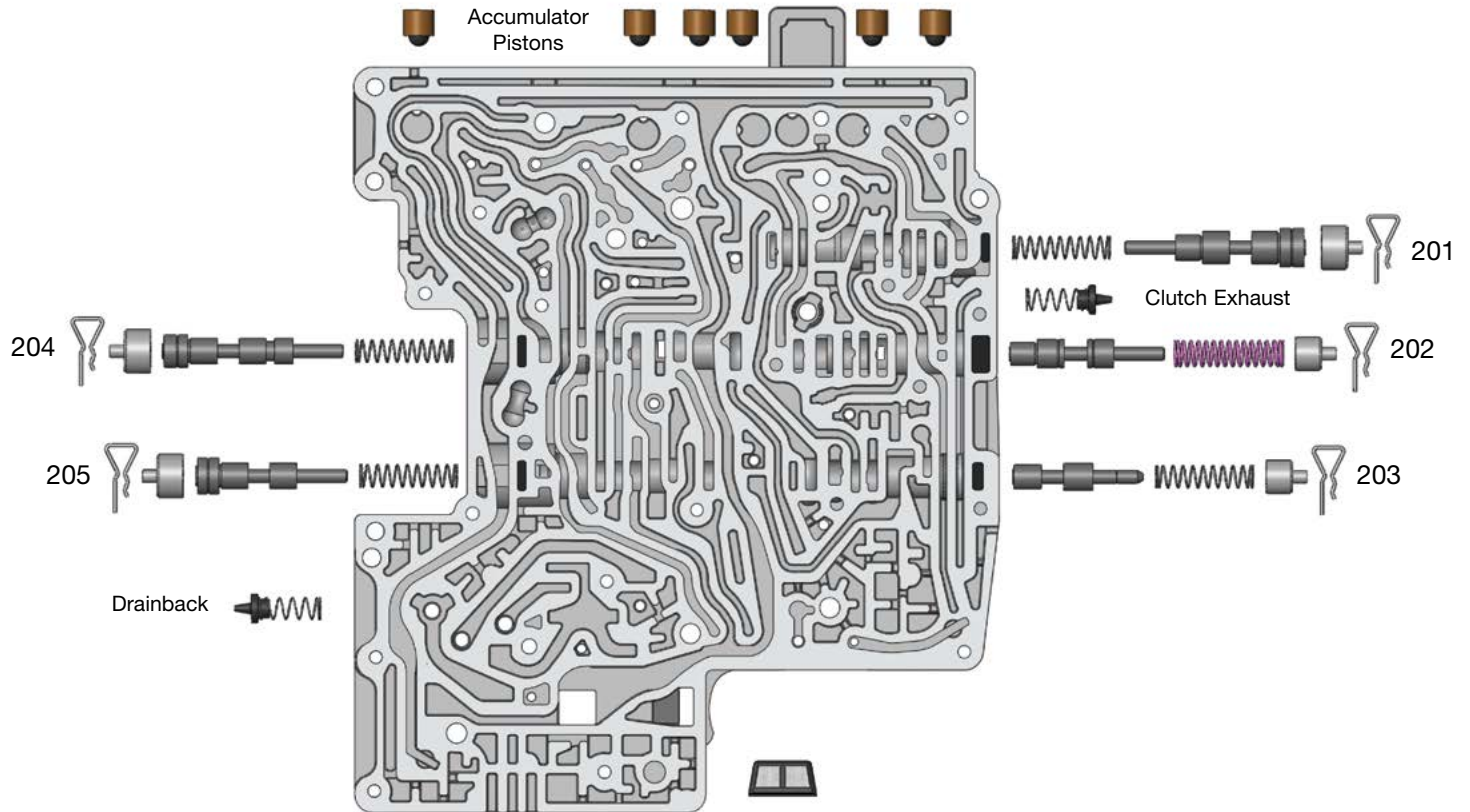


****NOTE:** ZF6HP19/26/32 (Gen. 1) applications with an 053 separator plate have significantly different valve line-ups and locations. Reference [Vacuum Test Guide for 053 plate](#) for test locations and replacement parts.



OE Exploded View

Upper Valve Body • Jaguar ZF6HP26, M-Shift Shown Here



Upper Valve Body Descriptions	
I.D. No.	Description
201	Clutch B Regulator Valve
202	Clutch D2 Regulator Valve
203	Clutch D2 Latch Valve
204	Clutch C Regulator Valve
205	Clutch D1 Control Pressure Regulator Valve