

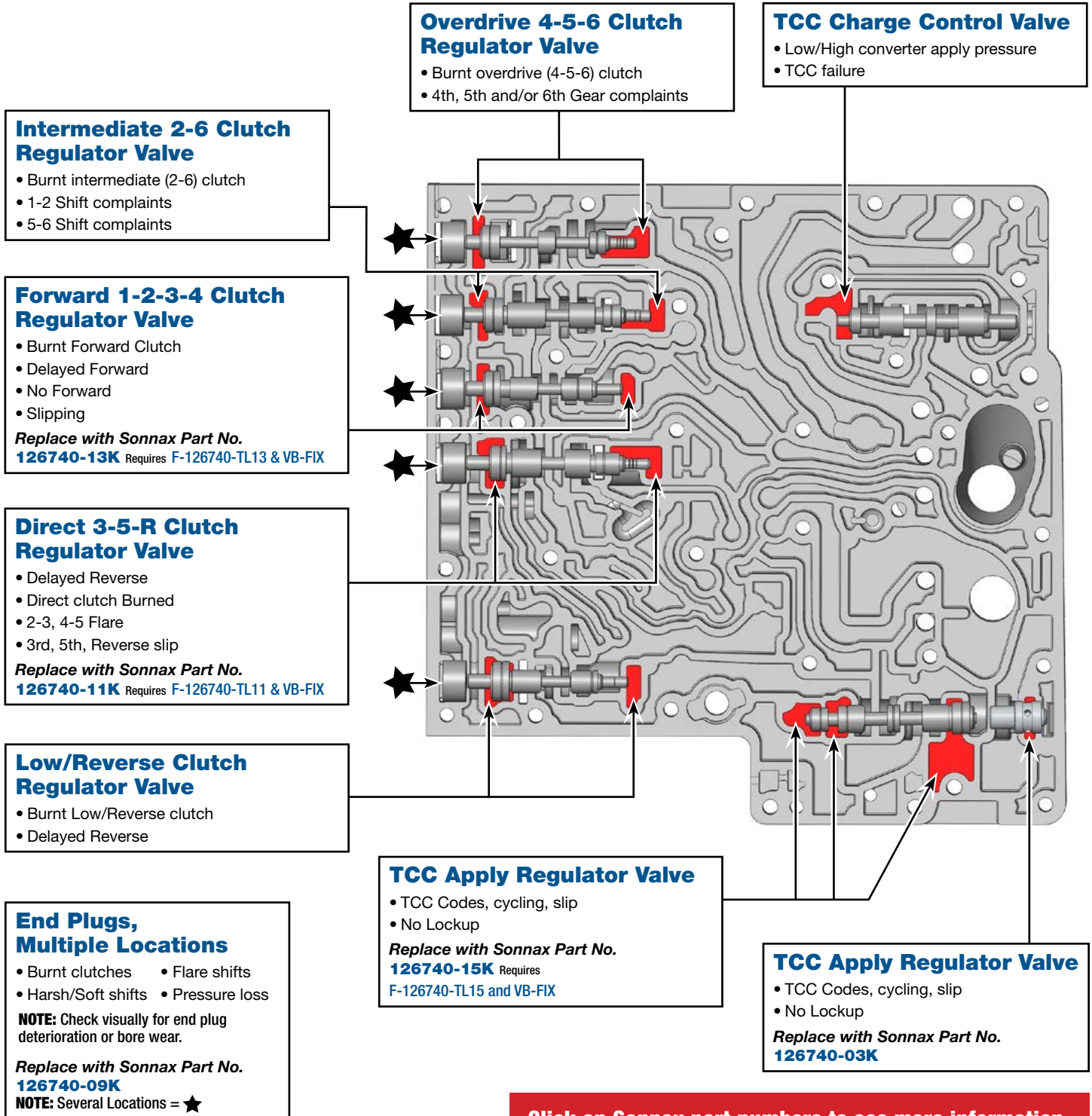


# Critical Wear Areas & Vacuum Test Locations



**NOTE:** OE valves are shown in rest position and should be tested in rest position unless otherwise indicated. Test locations are pointed to with an arrow. Springs are not shown for visual clarity. Low vacuum reading indicates wear.

## Upper Valve Body



**Click on Sonnax part numbers to see more information.**

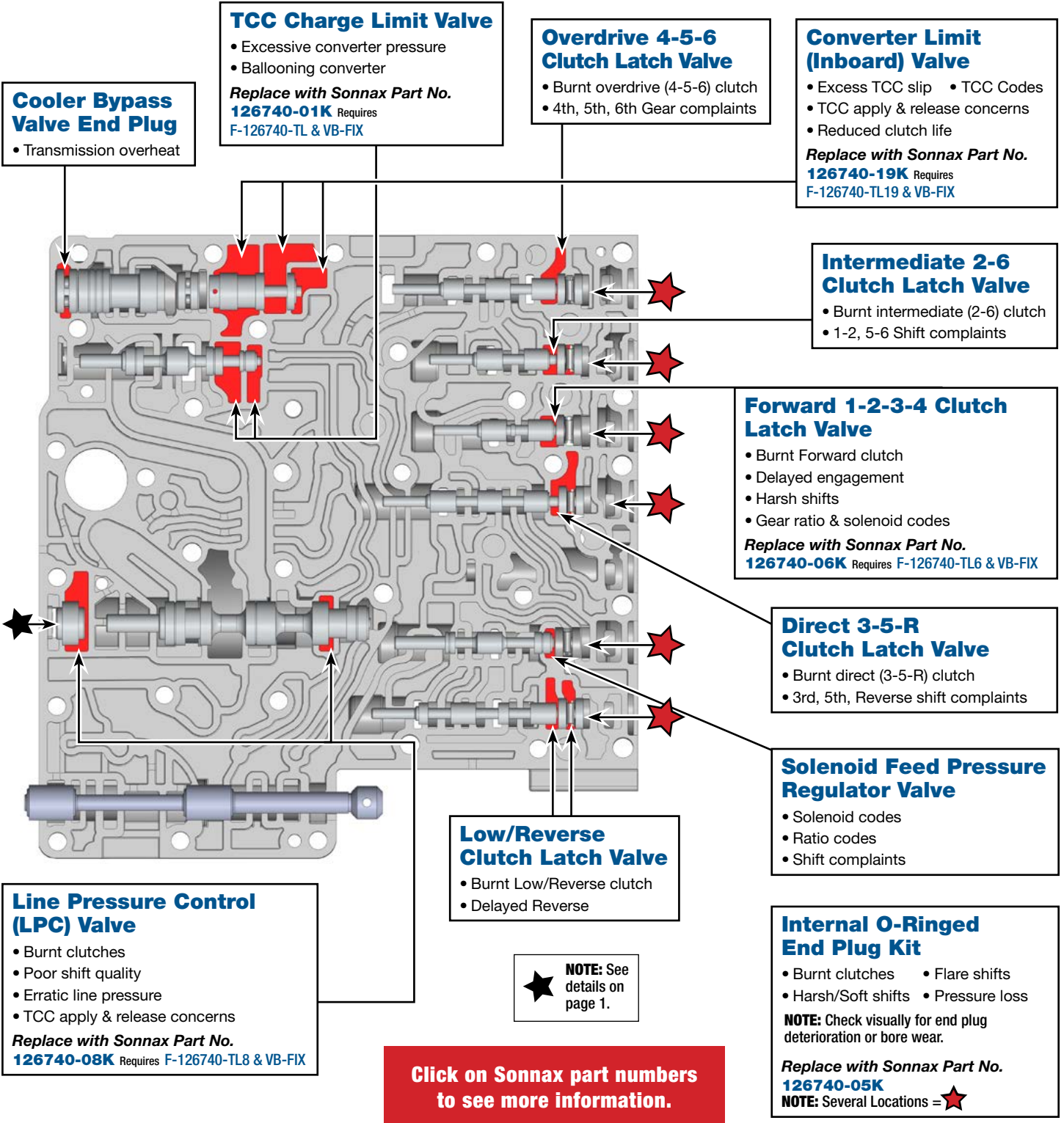


# Critical Wear Areas & Vacuum Test Locations



**NOTE:** OE valves are shown in rest position and should be tested in rest position unless otherwise indicated. Test locations are pointed to with an arrow. Springs are not shown for visual clarity. Low vacuum reading indicates wear and Sonnax parts noted for replacement.

## Lower Valve Body

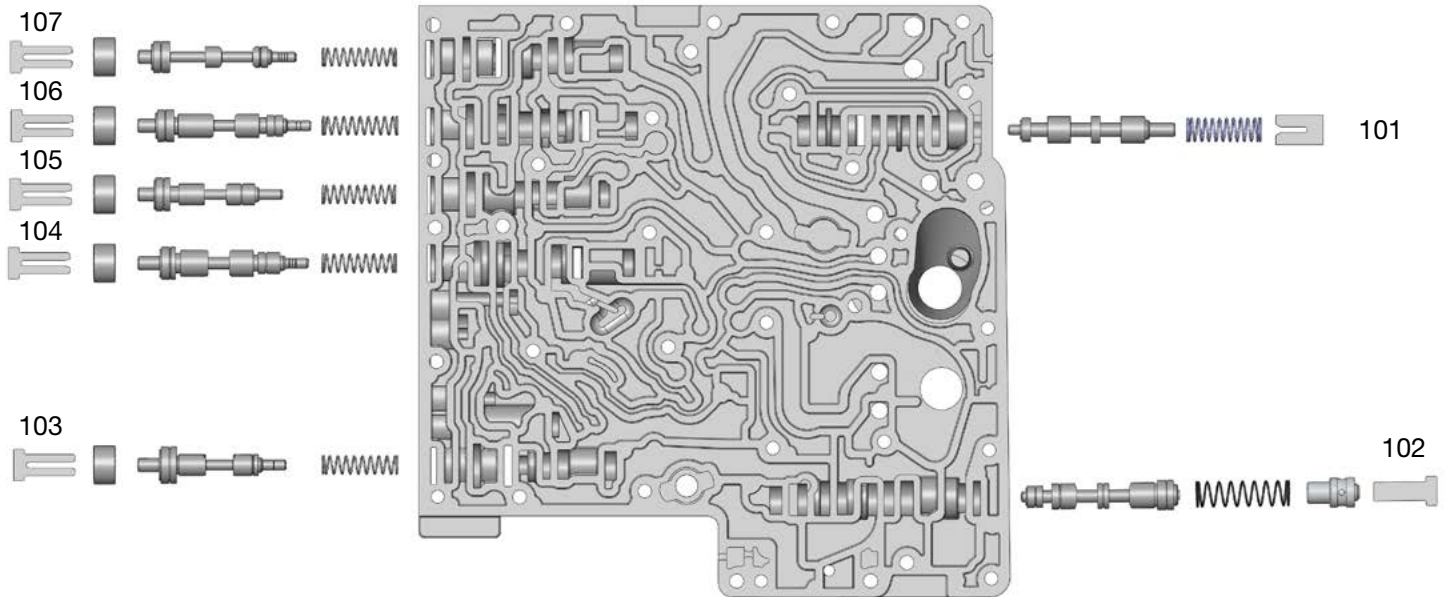




## OE Exploded View

**NOTE:** Depending upon vehicle application, the OE springs shown may not be present.

### Upper Valve Body



#### Upper Valve Body Descriptions

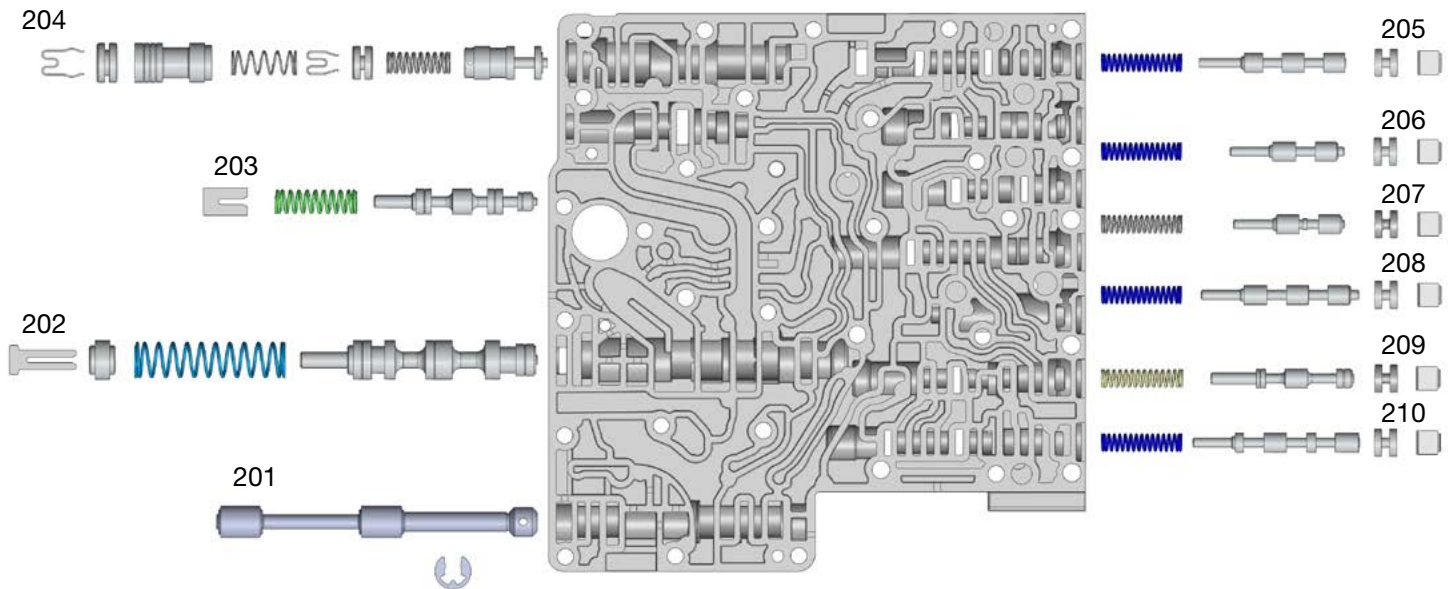
I.D. No.	Description
101	TCC Charge Control Valve
102	TCC Apply Regulator Valve
103	Low/Reverse Clutch Regulator Valve
104	Direct 3-5-R Clutch Regulator Valve
105	Forward 1-2-3-4 Clutch Regulator Valve
106	Intermediate 2-6 Clutch Regulator Valve
107	Overdrive 4-5-6 Clutch Regulator Valve



## OE Exploded View

**NOTE:** Depending upon vehicle application, the OE springs shown may not be present.

### Lower Valve Body



#### Lower Valve Body Descriptions

I.D. No.	Description
201	Manual Valve
202	Line Pressure Control (LPC) Valve
203	TCC Charge Limit Valve
204	Converter Limit (Inboard) Cooler Bypass (Outboard)
205	Overdrive 4-5-6 Clutch Latch Valve
206	Intermediate 2-6 Clutch Latch Valve
207	Forward 1-2-3-4 Clutch Latch Valve
208	Direct 3-5-R Clutch Latch Valve
209	Solenoid Feed Pressure Regulator Valve
210	Low/Reverse Clutch Latch Valve